

Guide

NEPA Environmental Assessment

NEPA Environment Assessment Guide with Free Project Checklist, Template, Samples

Everything You Need to Streamline Your NEPA Environmental Assessment Process

Tackling a federal project means navigating a maze of environmental regulations. Chances are, you've already met the National Environmental Policy Act ([NEPA](#)), and its powerful tool: the NEPA Environmental Assessment (EA).

Whether you're a project manager, consultant, planner, or agency lead, a solid grasp of the NEPA EA process isn't just helpful, it's essential. It's your key to saving time, minimizing legal risk, and confidently advancing your project.

In this guide, we'll walk you through everything you need to know about the NEPA environmental assessment process. You'll learn how to distinguish between an Environmental Assessment (EA) and an Environmental Impact Statement (EIS), what NEPA compliance requires, and how to manage public participation and stakeholder engagement.

And to make your life easier, you can leverage a [free NEPA Environmental Assessment Checklist](#). This ready-to-use tool will help you stay on track.

What's in this NEPA Assessment Guide?

- [A What Is a NEPA EA?](#)
 - [What's Covered by NEPA Requirements Environmental Assessment?](#)
 - [NEPA EA vs. EIS NEPA: What's the Difference?](#)
 - [Key Steps in the NEPA Environmental Assessment Process](#)
 - [What's the Environmental Impact Statement in NEPA?](#)
 - [Download a Free NEPA Environmental Review Checklist](#)
 - [Free Templates and Samples to Guide Your NEPA EA](#)
 - [Common NEPA Assessment Challenges \(and How to Overcome Them\)](#)
 - [NEPA Requirements for Environmental Assessments](#)
 - [The Role of NEPA EIA in Environmental Decision-Making](#)
 - [Tips for a Smooth NEPA Environmental Review](#)
 - [Parting Thoughts: Make NEPA Work for Your Project](#)
 - [FAQs: NEPA Environmental Assessment](#)
-

A What Is a NEPA EA?

A NEPA Environmental Assessment (EA) is a concise document that helps federal agencies determine whether a proposed action will have significant environmental effects. It's a core part of the NEPA environmental review process, bridging the gap between minor actions (categorical exclusions) and major ones (which require a full Environmental Impact Statement under NEPA, or EIS NEPA).

The purpose of the NEPA EA is to:

- Provide evidence and analysis to determine whether an EIS is required
- Ensure federal agencies comply with NEPA's environmental protection goals
- Inform decision-makers and the public about the environmental impacts of proposed actions

If the EA concludes that the impacts are not significant, the agency issues a **Finding of No Significant Impact (FONSI)**. If impacts are significant, the process escalates to a full NEPA EIS.

What’s Covered by NEPA Requirements Environmental Assessment?

The National Environmental Policy Act (NEPA) outlines the steps federal agencies must follow when making decisions about proposed actions. This includes a wide range of activities, such as:

- Issuing permits for private actions.
- Financing, assisting, conducting, or approving projects or programs.
- Creating agency rules, regulations, plans, policies, or procedures.
- Making federal land management decisions.
- Developing agency legislative proposals.

NEPA comes into play whenever a federal agency has the ability to choose between different ways to achieve a specific objective. It happens before a decision or approval can be made.

Often, private individuals or companies get involved in the NEPA process because they need a permit from a federal agency. For example, if a company applies for a permit to cross federal lands or impact U.S. waters, the agency responsible for issuing that permit must assess the likely environmental effects of their decision. These effects must have a reasonably direct link to the agency's action.

While federal agencies may require the private company or developer to cover the costs of preparing these environmental analyses, the agency ultimately remains accountable for the accuracy and scope of the analysis.

NEPA EA vs. EIS NEPA: What’s the Difference?

Both the NEPA EA and the Environmental Impact Statement under NEPA (EIS NEPA) serve to evaluate environmental consequences, but their scope and depth vary.

Feature	NEPA EA	EIS NEPA
Purpose	Determine if a full EIS is needed	Full analysis of significant impacts
Length	Concise (typically 10–50 pages)	Comprehensive (hundreds of pages)
Outcome	Finding of no significant impact (FONSI) or move to EIS	Record of Decision (ROD)
Public Involvement	Required, but less intensive	Required, includes formal scoping and comment process

Pro Tip: Always use a [NEPA Environmental Assessment Checklist](#) to make sure you're covering the right level of analysis based on project size, location, and impact.

Key Steps in the NEPA Environmental Assessment Process

Let's break down the NEPA EA process into clear, manageable steps. Whether you're writing your first assessment or optimizing your tenth, these steps will keep you grounded:

1. Determine NEPA Applicability

Start by reviewing whether your project qualifies for a [Categorical Exclusion \(CE\)](#). If it doesn't, you'll need an EA or EIS.

2. Define the Purpose and Need

This section outlines why the project is necessary and what it aims to accomplish. It also sets the foundation for evaluating alternatives.

3. Develop Alternatives

Include the proposed action, the no-action alternative, and any reasonable alternatives. Alternatives are at the heart of NEPA's decision-making framework.

4. Conduct Environmental Analysis

Use technical studies, modeling, and expert review to assess potential impacts on:

- Air and water quality
- Land use and geology
- Wildlife and endangered species
- Cultural and historical resources
- Human health and socioeconomics
- Environmental justice communities

5. Mitigation Measures

Identify actions to reduce or eliminate adverse effects. These should be practical, measurable, and enforceable.

6. Engage the Public and Stakeholders

Public outreach is both a legal requirement and a strategic advantage. Your NEPA environmental review must document engagement efforts, such as:

- Notices of availability
- Public meetings
- Tribal consultation
- Comment responses

7. Prepare the Draft EA

Ensure it includes:

- Cover page and summary
- Purpose and need
- Alternatives
- Affected environment
- Environmental consequences
- Mitigation and monitoring plan
- List of preparers and references

8. Review and Finalize

After public review, revise the draft and publish the final EA. If the impacts are found insignificant, issue a finding of no significant impact (FONSI). If not, proceed to a full NEPA EIS (Environmental Impact Statement).

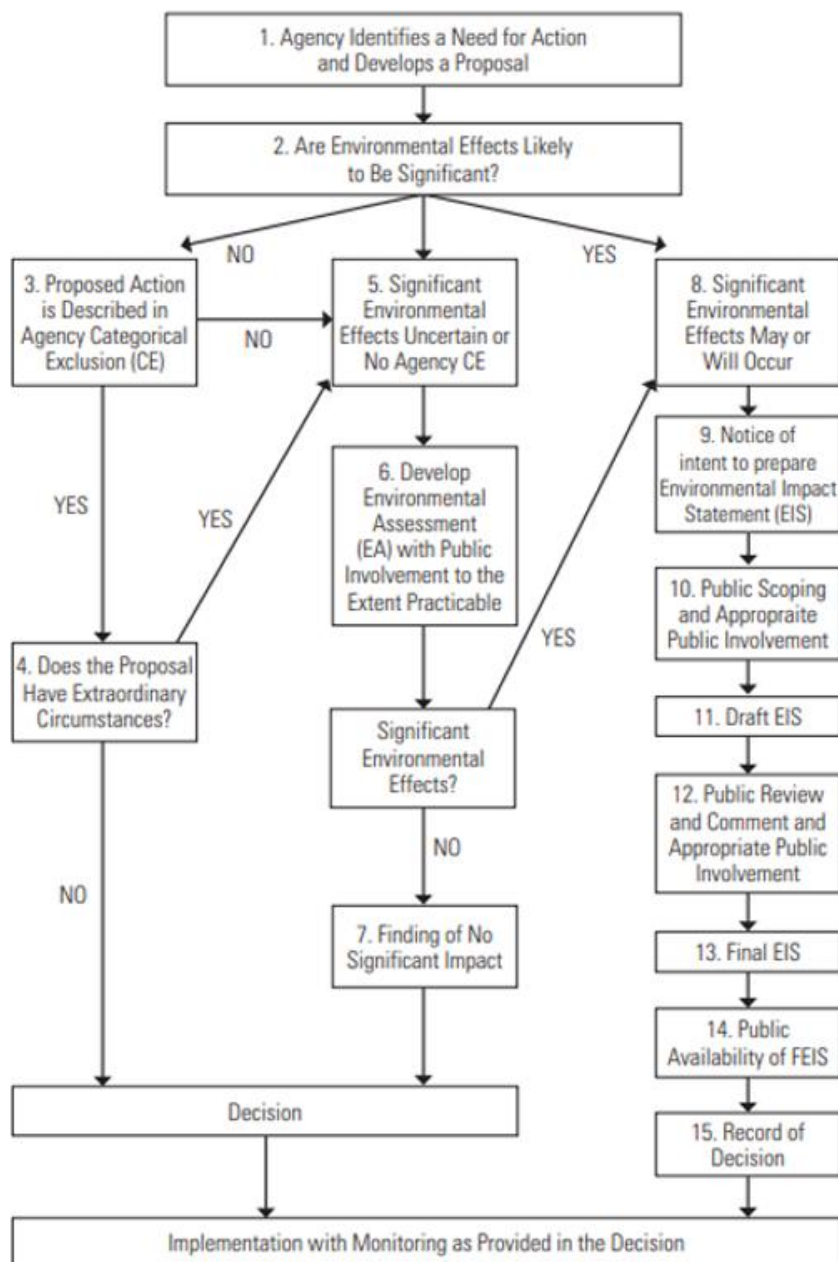
What's the Environmental Impact Statement in NEPA?

A NEPA Environmental Impact Statement (EIS) is a detailed, federally mandated document that evaluates the potential significant environmental effects of a proposed major action or project. The EIS process follows a clear step-by-step framework:

1. **Determine the Need for an EIS:** If a preliminary Environmental Assessment (EA) shows that a proposed federal action may cause significant environmental impacts, an Environmental Impact Statement NEPA is required.
2. **Conduct Scoping:** The agency begins with a public scoping process to identify key issues, potential impacts, affected stakeholders, and reasonable alternatives. Input is gathered from the public, tribes, agencies, and other interested parties.

3. **Develop Alternatives:** The NEPA EIS must analyze a range of alternatives, including the “No Action” alternative, the proposed action, and other reasonable options. Each alternative is evaluated for environmental impacts.
4. **Prepare the Draft EIS:** The agency compiles technical studies, public input, and environmental analysis into a Draft EIS. It includes detailed sections on the affected environment, potential impacts, mitigation strategies, and compliance with relevant laws.
5. **Public Review and Comment:** The Draft EIS is published and made available for public comment, typically for a minimum of 45 days. Public hearings or meetings may also be held.
6. **Revise and Finalize the EIS:** After reviewing and addressing public and agency comments, the agency prepares a Final EIS. It includes responses to comments, refinements to the analysis, and may adjust project plans or mitigation based on feedback.
7. **Issue a Record of Decision (ROD):** Following a mandatory 30-day waiting period, the agency issues a Record of Decision. The ROD identifies the selected alternative, outlines mitigation commitments, and explains the rationale for the decision.

The NEPA Process (Figure 1)



** Significant new circumstances or information relevant to environmental concerns or substantial changes in the proposed action that are relevant to environmental concerns may necessitate preparation of a supplemental EIS following either the draft or final EIS, or the Record of Decision. 40 CFR 1502.9(d).*

Source: [Council on Environmental Quality](#)

Download a Free NEPA Environmental Assessment Checklist

A solid NEPA environmental assessment checklist helps ensure you don't miss a beat. Here's what you should include:

- ✓ Project background and purpose
- ✓ NEPA applicability screening
- ✓ Regulatory framework (federal, state, tribal)
- ✓ Scoping results
- ✓ List of alternatives
- ✓ Description of affected environment
- ✓ Impact assessment (biophysical, cultural, social)
- ✓ Cumulative impacts analysis
- ✓ Public and agency involvement
- ✓ Mitigation strategies
- ✓ Legal sufficiency review
- ✓ Documentation of FONSI or EIS trigger

[Download your free NEPA EA Checklist now](#) to jumpstart or improve your environmental assessment workflow.

Free Templates and Samples to Guide Your NEPA EA

Looking for a head start? In addition to the checklist, here are a few useful NEPA EA templates and resources you can draw from:

[NEPAssist](#)

NEPAssist is a free online tool provided by the EPA. It helps with the environmental impact statement NEPA process by providing a map interface that dynamically pulls from EPA Geographic Information System databases and web services.

[NEPA Environmental Impact Assessment Repository](#)

A repository of NEPA EA documents from several projects. Use this to review formatting and content that is typically included in a NEPA EIA.

[Anatomy of a NEPA Assessment](#)

Detailed layout requirements for a NEPA Environmental Assessment.

Common NEPA Assessment Challenges (and How to Overcome Them)

Even seasoned professionals face hurdles in NEPA EA work. Here are some pitfalls and how to avoid them:

Incomplete Scoping

Solution: Use a NEPA environmental review checklist during the planning phase to make sure all stakeholder and resource concerns are addressed.

Underestimating Social Impacts

Solution: Don't forget NEPA social impact assessment. Include community demographics, displacement risks, and public service changes.

Forgetting Cumulative Effects

Solution: NEPA requires an evaluation of how your project fits into the larger picture; other projects, past or future, count too.

Poor Documentation

Solution: Keep a clear trail using your NEPA environmental assessment checklist and reference logs. It makes audits and legal reviews smoother.

What challenges have you faced when working with the NEPA environmental impact statement or NEPA EA? [Please let us know](#) and we can share that above to help others.

NEPA Requirements for Environmental Assessments

Let's be clear: the NEPA process is about more than just paperwork. It's grounded in law. According to NEPA requirements for environmental assessment, your EA must:

- Comply with 40 CFR Parts 1500–1508 (Council on Environmental Quality regulations)
- Be completed before any irreversible commitment of resources

- Include inter-agency coordination
- Address all reasonably foreseeable environmental consequences

That's why a well-organized NEPA assessment checklist and early planning are essential.

The Role of NEPA EIA in Environmental Decision-Making

You might wonder, is NEPA EIA the same as an EA? Not exactly. Environmental Impact Assessment (EIA) is a broader term used globally, while NEPA EA is specific to U.S. law. But the goals align: informed decisions, public involvement, and protection of the environment.

In fact, many federal agencies integrate NEPA environmental impact assessment techniques with global best practices in sustainability, resilience, and climate adaptation.

Tips for a Smooth NEPA Environmental Review

Here's a checklist of best practices to simplify your NEPA environmental review:

- ✓ Start early to allow for agency and public feedback
 - ✓ Use existing data and prior assessments to avoid duplication
 - ✓ Apply a consistent format across all NEPA documents
 - ✓ Build relationships with local and tribal stakeholders
 - ✓ Conduct a legal review before publishing
 - ✓ Archive your NEPA environmental assessment checklist for future audits
-

Parting Thoughts: Make NEPA Work for Your Project

The NEPA Environmental Assessment process doesn't have to be overwhelming. With the right tools, clear steps, and a strong checklist, you can manage your NEPA EA efficiently and with confidence.

Your goal isn't just to comply, it's to build better, more sustainable projects that align with community values and environmental responsibility.

✅ Ready to get started? [Download your Free NEPA Environmental Assessment Checklist](#) now.

Related Topics You Might Explore Next:

- [Environmental Impact Assessment Studies for Different Sectors & Regions](#)
 - [Guide to Writing an Effective EIA Terms of Reference](#)
 - [Social Impact Assessment Guide with Template & Samples](#)
-

FAQs: NEPA Environmental Assessment

Q1. What triggers a NEPA Environmental Assessment (EA)?

A1: A NEPA EA is triggered when a proposed federal action is not categorically excluded but may not require a full EIS. It's used to determine if significant impacts exist.

Q2. When is an Environmental Impact Statement (EIS) required under NEPA?

A2: An EIS NEPA is required when an EA determines that the project will have significant environmental impacts that cannot be mitigated.

Q3. What's included in the NEPA assessment checklist?

A3: The checklist includes several items to guide your NEPA requirements environmental assessment, such as project description, alternatives, environmental effects, public involvement, mitigation, and compliance documentation.

Q4. How does NEPA handle social impact assessments?

A4: Social impacts are addressed through NEPA social impact assessments, part of the NEPA EIS, which evaluate effects on population dynamics, community services, public health, and environmental justice.

View our website for more helpful guides:

<https://assessmentstools.com/>
