

---

## Guide

### ESIA Surveys

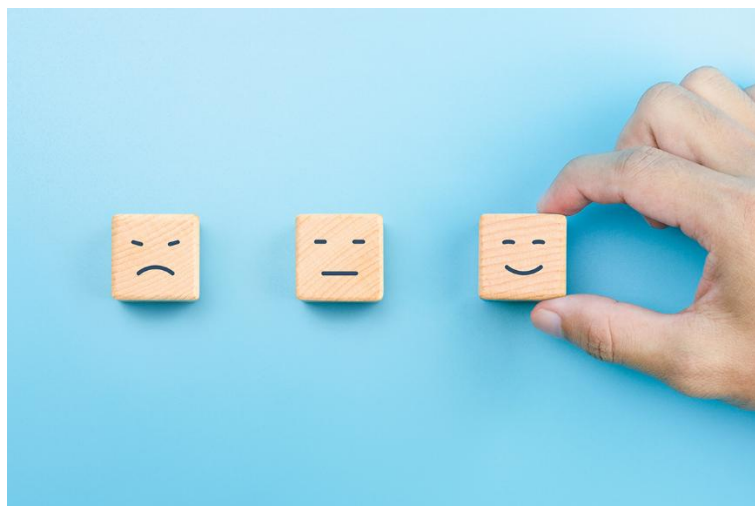
---

#### ESIA Assessment Survey & Questionnaires for New Projects in 2025

##### **What to Ask and How to Analyze Social & Environmental Impact Surveys**

Launching a new project in 2025? Whether it's a construction site, infrastructure rollout, or manufacturing hub, one thing is certain...you'll need a reliable Environmental and Social Impact Assessment (ESIA) strategy. And at the heart of every successful ESIA is a well-crafted EIA survey and social impact assessment questionnaire.

Why? Because the data collected through your surveys and questionnaires informs the decisions that affect people, ecosystems, livelihoods, and long-term sustainability. So, what should you ask? Who should you ask? And what does a strong environmental impact survey look like?



In this guide, we'll break down how to build an ESIA questionnaire, explore real-world applications, and show you how to interpret the data to drive responsible development.

 Be sure to download your [\*\*Free Social & Environmental Impact Survey Template\*\*](#) at the end of this post. It's a ready-to-use tool designed for 2025 projects.

---

## What's in this EIA Survey Guide?

- [Why ESIA Surveys Are Critical for New Projects](#)
  - [Who Should You Survey?](#)
  - [Crafting Your ESIA Survey: What to Include](#)
    - [Environmental Impact Survey Questions](#)
    - [Social Impact Assessment Survey Questions](#)
  - [ESIA Trends to Watch](#)
  - [How to Analyze and Use Your ESIA Survey Data](#)
  - [Case Example: A Real-World ESIA Survey in Action](#)
  - [Tips for High-Quality ESIA Surveys](#)
  - [Free Download: Social & Environmental Impact Survey Template](#)
  - [EIA Survey Conclusion](#)
  - [FAQ: EIA Survey Guide](#)
- 

## Why ESIA Surveys Are Critical for New Projects

[Environmental and Social Impact Assessments](#) are not just about ticking regulatory boxes; they're about making sure your project contributes to positive outcomes for both people and the planet.

EIA surveys and social impact assessment surveys help you:

- Identify environmental and social risks early
- Understand community needs and concerns
- Monitor long-term changes over time
- Build trust and transparency with stakeholders
- Satisfy local and international compliance standards

Without solid data, your impact assessment is essentially guesswork. But a focused sample questionnaire for environmental impact assessment reveals insights that are actionable, measurable, and defensible.

---

## Who Should You Survey?

Effective ESIA assessments start by identifying who the stakeholders are. For most projects, you'll need feedback from:

- Local residents and community members
- Workers and labor unions
- Environmental groups
- Local government authorities
- Business owners and land users
- Indigenous and vulnerable populations

The goal is to ensure your social impact survey and environmental impact survey reflect the lived experiences and concerns of people directly or indirectly impacted by the project.

---

## Crafting Your ESIA Survey: What to Include

When developing a [social impact assessment](#) questionnaire or environmental impact survey template, your questions should be open, inclusive, and evidence-driven. Here's how to get started.

### 1. Environmental Impact Survey Questions

The environmental impact survey portion should focus on:

#### General Perception

- How would you describe the current state of the local environment?
- What environmental concerns do you have in this area?

#### Site-Specific Impact

- How do you think the proposed project will affect air quality, noise levels, or water access?
- Are you aware of any endangered species or fragile ecosystems in the project area?

## **Resources & Pollution**

- Do you believe the project could increase pollution or deplete local resources?
- What should be done to prevent environmental damage during and after construction?

Use a mix of Likert-scale ratings, yes/no, and open-ended questions. Your environmental impact survey template should offer flexibility for both qualitative and quantitative responses.

---

## **2. Social Impact Assessment Survey Questions**

A strong social impact assessment survey reveals how your project may affect social dynamics, community resilience, and well-being. Ask questions about:

### **Livelihoods & Employment**

- Will this project create or take away local jobs?
- How will your family's income be affected?

### **Housing, Land & Displacement**

- Are you concerned about displacement or land loss?
- Do you feel informed about your rights if relocation is necessary?

### **Community Services**

- How will this project affect access to healthcare, education, or public transportation?
- Are there concerns about overpopulation or pressure on local infrastructure?

### **Culture & Inclusion**

- Will the project affect cultural or spiritual heritage sites?
- Do you feel included in the decision-making process?

This social impact assessment questionnaire should be translated into local languages and adapted for culturally appropriate delivery. Focus groups and one-on-one interviews can also provide rich context to support the survey results.

---

## ESIA Trends to Watch

Environmental and social impact assessments are evolving in 2025, and your surveys need to keep up. Here's what's trending:

### Digital and Remote Surveys

Post-pandemic digitization has pushed ESIA surveys online. Use mobile-friendly forms, QR codes, and SMS-based tools to reach communities remotely. Just remember to also provide paper-based or in-person options where digital access is limited.

### Participatory Design

In 2025, stakeholders expect more than consultation. They want collaboration. Co-design your social impact survey with community leaders and local NGOs to increase response rates and build credibility.

### ESG Integration

Investors want Environmental, Social, and Governance (ESG) reporting tied directly to ESIA outcomes. Make sure your environmental impact survey template includes indicators that map to ESG goals such as carbon reduction, biodiversity protection, or social equity.

---

## How to Analyze and Use Your ESIA Survey Data

Collecting responses is just the beginning. What matters most is how you **analyze** and **use** the findings.

### 1. Quantitative Analysis

Use Excel, Google Sheets, or survey platforms to:

- Calculate percentage breakdowns (e.g., 68% of residents fear noise pollution)
- Compare perceptions across different groups (e.g., men vs. women, local vs. displaced)
- Track trends over time (baseline vs. post-implementation)

### 2. Qualitative Analysis

Open-ended responses can reveal emotional responses and deep concerns. Use keyword coding or thematic analysis to cluster insights by:

- Major themes (e.g., job loss, air pollution, water access)
- Emotional tone (e.g., anger, hope, fear)
- Recommendations (e.g., requests for green spaces, employment guarantees)

### 3. Mapping and Visualization

Use maps or dashboards to illustrate:

- Areas with the highest concern
- Hotspots for specific risks (e.g., flood-prone zones)
- Sentiment distribution across different regions

These visual tools can help decision-makers act quickly and effectively.

---

## Case Example: A Real-World ESIA Survey in Action

A renewable energy company in Latin America conducted an EIA survey and social impact assessment survey before building a solar farm. Here's what they did right:

- **Partnered with local NGOs** to co-develop the questionnaire
- **Translated surveys** into Spanish and Indigenous languages
- **Held listening sessions** with women and elders to capture unheard voices
- **Mapped community feedback** to redesign the project layout to avoid a sacred site

As a result, the project received strong community support, avoided delays, and secured ESG-aligned funding. It's a powerful example of how the right sample questionnaire for [environmental impact assessment](#) can lead to real-world success.

---

## Tips for High-Quality ESIA Surveys

1. **Pilot Test Your Survey:** Run your draft EIA survey with 5 to 10 stakeholders and adjust based on their feedback.
2. **Ensure Anonymity:** Make it safe for people to speak honestly.
3. **Offer Incentives:** Small tokens (like phone credit or snacks) can increase participation rates.
4. **Time It Right:** Avoid survey periods during planting seasons, festivals, or migration times.
5. **Hire Local Enumerators:** They understand the context, culture, and language best.

---

## Free Download: Social & Environmental Impact Survey Template

Ready to get started?

 [Download Your Free Social & Environmental Impact Survey Template](#)

Whether you're working on infrastructure, housing, agriculture, or energy projects, this environmental impact survey template and social impact assessment questionnaire can save you time while improving your impact strategy.

---

## EIA Survey Conclusion: Ask the Right Questions, Get the Right Results

Your project's success is measured by more than good engineering plans and financial models; it hinges on understanding people and ecosystems. That's where your EIA survey, social impact assessment survey, and environmental impact survey come in.

A well-crafted ESIA survey:

- Helps anticipate and mitigate risks
- Builds trust with communities and partners
- Strengthens ESG alignment and funding eligibility
- Informs smarter, more ethical project design

Use this opportunity to lead with insight, empathy, and data. And don't forget to grab your [Free Social & Environmental Impact Survey Template](#) to put all these best practices into action.

Here's to building a better, more inclusive, and sustainable world one question at a time.

---

## FAQ: EIA Survey Guide

**Q: What is the purpose of an EIA survey?**

**A:** An EIA survey (Environmental Impact Assessment survey) is used to collect data from communities and stakeholders about how a proposed project might affect the

environment. It helps project teams identify risks, improve design, and meet regulatory requirements.

**Q: How is a social impact assessment questionnaire different from an environmental one?**

**A:** A social impact assessment questionnaire focuses on how a project may affect people's lives, jobs, culture, and well-being, while an environmental impact survey examines how the project might impact air, water, land, wildlife, and natural resources.

**Q: Who should complete the ESIA survey?**

**A:** Stakeholders such as local residents, business owners, indigenous groups, NGOs, and government representatives should complete the social and environmental impact survey to provide a full view of the project's impact.

**Q: Can I customize the sample questionnaire for environmental impact assessment?**

**A:** Yes! The sample questionnaire for environmental impact assessment is in Microsoft Word format and fully editable. You can tailor it to fit your project type, location, and stakeholder needs.

---

View our website for more helpful guides:

<https://assessmentstools.com/>

---